

Sample	
A-1	Untreated
A-2	Untreated
A-3	Untreated
A-4	Untreated
A-4b	Keim Dilution Purkristalt (Brush Applied)
A-5	Untreated
A-5b	Keim Granital (Brush Applied)
A-6	Untreated
A-6b	Keim Restauro (Brush Applied)
B-1	Untreated
B-2	Untreated
B-3	Untreated
B-4	Untreated
B-5	Untreated
B-5b	Prosoco H100 (Brush Applied)
B-6	Untreated
B-6b	Prosoco OH100 (Brush Applied)
C-1	Keim Silex OH (Brush Applied)
C-2	Keim Silex OH (Brush Applied)
C-3	Decothane (Brush Applied)
C-4	Decothane (Brush Applied)
C-5	Keim Dilution (saturated)
C-6	Keim Granital (saturated)
C-8	Uncoated (DUMMY)
C-9	Keim Restauro (saturated)
C-10	Keim Silex H (saturated)
C-11	Keim Silex OH (saturated)
D-1	Silex H (Brush Applied)
D-2	Silex H (Brush Applied)
D-3	H100 Conservare (saturated)
D-4	OH100 (saturated)

Core A Untreated**Diam. in cm 5.08**

CORE Date and Time (m/d/y h:mm) in 24 hr clock	A-1			A-2			A-3			avg Δ	adj.avg	R.H.	TEMP.
	Weight	Water Vapor Loss in 24 hour period	WVTR	Weight	Water Vapor Loss in 24 hour period	WVTR	Weight	Water Vapor Loss in 24 hour period	WVTR				
7/10/02 12:15	119.080			98.010			93.760					67%	23.9
7/11/02 12:20	118.390	0.688	33.51	97.230	0.777	37.88	92.950	0.807	39.34	0.757		41%	23.4
7/12/02 12:15	117.210	1.184	57.71	96.150	1.084	52.81	91.870	1.084	52.81	1.117		45%	23.4
7/15/02 12:20	116.050	0.386	18.82	94.470	0.559	27.26	90.110	0.586	28.56	0.511	0.80	54%	23.4
7/16/02 12:30	115.530	0.516	25.17	93.880	0.586	28.55	90.510	-0.397	-19.36	0.235	0.66	55%	23.4
7/17/02 12:20	115.010	0.524	25.52	93.150	0.735	35.82	89.600	0.916	44.66	0.725	0.67	53%	23.2
7/18/02 12:20	114.390	0.620	30.21	92.540	0.610	29.73	88.120	1.480	72.12	0.903	0.71	50%	23.2
7/19/02 12:20	113.900	0.490	23.88	91.990	0.550	26.80	87.550	0.570	27.78	0.537	0.68	55%	23.4
7/22/02 12:30	112.030	0.622	30.31	89.500	0.828	40.35	85.360	0.728	35.49	0.726	0.69	45%	23.3
7/23/02 12:55	111.330	0.688	33.53	88.940	0.550	26.82	84.430	0.914	44.55	0.718	0.69	41%	23.3
7/24/02 12:40	110.830	0.505	24.62	88.330	0.616	30.04	83.810	0.627	30.53	0.583	0.68	51%	23.6
7/25/02 12:35	110.390	0.442	21.52	87.980	0.351	17.12	82.270	1.545	75.31	0.779	0.69	55%	23.3
7/29/02 12:45	108.790	0.399	19.46	85.900	0.519	25.30	81.370	0.225	10.95	0.381	0.66	55%	23.3
7/30/02 12:30	108.400	0.394	19.21	85.430	0.475	23.15	80.900	0.475	23.15	0.448	0.65	69%	23.3
7/31/02 12:55	107.760	0.629	30.66	84.750	0.668	32.57	80.170	0.718	34.97	0.672	0.65	49%	23.3
8/1/02 12:45	107.250	0.514	25.03	84.140	0.614	29.93	79.560	0.614	29.93	0.581	0.64	51%	23.3
8/2/02 12:40	106.760	0.492	23.96	83.570	0.572	27.87	78.990	0.572	27.87	0.545	0.64	52%	23.4
avg WVTR (g/hr/m2)			27.69			30.75			34.92		0.67	52%	23.4
average, material type:											31.51		

Core A Untreated

CORE Date and Time (m/d/y h:mm) in 24 hr clock	A-4			A-5			A-6			Weight	Water Vapor Loss in 24 hour period	WVTR	avg Δ	adj. avg	R.H.	TEMP.
	Weight	Water Vapor Loss in 24 hour period	WVTR	Weight	Water Vapor Loss in 24 hour period	WVTR	Weight	Water Vapor Loss in 24 hour period	WVTR							
7/10/02 12:15	97.940			90.920			87.960								67%	23.9
7/11/02 12:20	97.160	0.777	37.88	90.120	0.797	38.85	87.180	0.777	37.88			0.588			41%	23.4
7/12/02 12:15	96.780	0.381	18.58	89.470	0.652	31.79	86.200	0.983	47.92			0.504	0.50		45%	23.4
7/15/02 12:20	94.480	0.766	37.32	87.350	0.706	34.40	84.410	0.596	29.04			0.517	0.51		54%	23.4
7/16/02 12:30	93.900	0.576	28.07	86.740	0.606	29.52	83.810	0.596	29.04			0.444	0.49		55%	23.4
7/17/02 12:20	93.250	0.655	31.90	86.170	0.574	27.97	83.200	0.614	29.93			0.461	0.48		53%	23.2
7/18/02 12:20	92.580	0.670	32.65	85.350	0.820	39.96	82.490	0.710	34.60			0.550	0.50		50%	23.2
7/19/02 12:20	92.020	0.560	27.29	84.290	1.060	51.66	81.930	0.560	27.29			0.545	0.50		55%	23.4
7/22/02 12:30	90.850	0.389	18.96	82.370	0.639	31.12	79.310	0.871	42.46			0.475	0.50		45%	23.3
7/23/02 12:55	89.070	1.750	85.26	81.720	0.639	31.14	78.890	0.413	20.12			0.700	0.52		41%	23.3
avg WVTR (g/hr/m2)			35.00			34.69			32.55					0.50	52%	23.4
average, material type:														31.67		

Core B Untreated

Diam. in cm 5.08

CORE Date and Time (m/d/y h:mm) in 24 hr clock	B-1			B-2			B-3			avg Δ	adj.avg	R.H.	TEMP.
	Weight	Water Vapor Loss in 24 hour period	WVTR	Weight	Water Vapor Loss in 24 hour period	WVTR	Weight	Water Vapor Loss in 24 hour period	WVTR				
7/10/02 12:15	106.470			94.050			100.870					67%	23.9
7/11/02 12:20	104.090	2.372	115.58	93.190	0.857	41.77	100.120	0.747				41%	23.4
7/12/02 12:15	103.890	0.201	9.78	92.150	1.044	50.86	99.850	0.271				45%	23.4
7/15/02 12:20	103.400	0.163	7.95	90.700	0.483	23.53	97.590	0.752	36.67	0.466	0.77	54%	23.4
7/16/02 12:30	101.650	1.738	84.69	90.060	0.636	30.97	96.970	0.616	30.01	0.996	0.82	55%	23.4
7/17/02 12:20	100.540	1.118	54.47	89.500	0.564	27.48	96.200	0.775	37.79	0.819	0.82	53%	23.2
7/18/02 12:20	99.320	1.220	59.45	88.840	0.660	32.16	95.720	0.480	23.39	0.787	0.82	50%	23.2
7/19/02 12:20	98.790	0.530	25.83	88.330	0.510	24.85	95.210	0.510	24.85	0.517	0.77	55%	23.4
7/22/02 12:30	96.350	0.811	39.54	86.790	0.512	24.96	93.790	0.472	23.01	0.599	0.75	45%	23.3
7/23/02 12:55	95.820	0.521	25.39	85.560	1.209	58.92	92.360	1.406	68.50	1.045	0.78	41%	23.3
7/24/02 12:40	95.230	0.596	29.06	85.040	0.525	25.61	91.810	0.556	27.09	0.559	0.76	51%	23.6
7/25/02 12:35	94.690	0.542	26.41	84.540	0.502	24.45	91.310	0.502	24.45	0.515	0.74	55%	23.3
7/29/02 12:45	92.930	0.439	21.41	82.870	0.417	20.31	90.600	0.177	8.64	0.344	0.71	55%	23.3
7/30/02 12:30	92.510	0.424	20.68	82.440	0.435	21.18	89.200	1.415	68.94	0.758	0.71	69%	23.3
7/31/02 12:55	91.830	0.668	32.57	81.800	0.629	30.66	88.530	0.659	32.09	0.652	0.71	49%	23.3
8/1/02 12:45	91.220	0.614	29.93	81.250	0.554	26.99	87.920	0.614	29.93	0.594	0.70	51%	23.3
8/2/02 12:40	90.630	0.592	28.85	80.720	0.532	25.92	87.370	0.552	26.90	0.559	0.69	52%	23.4
avg WVTR (g/hr/m2)			38.23			30.66			33.02		0.80	52%	23.4
average, material type:											35.22		

Core B Untreated

CORE Date and Time (m/d/y h:mm) in 24 hr clock	B-4			B-5			B-6			Weight	Water Vapor Loss in 24 hour period	WVTR	avg Δ	adj. avg	R.H.	TEMP.
	Weight	Water Vapor Loss in 24 hour period	WVTR	Weight	Water Vapor Loss in 24 hour period	WVTR	Weight	Water Vapor Loss in 24 hour period	WVTR							
7/10/02 12:15	99.900			101.790			97.650								67%	23.9
7/11/02 12:20	99.130	0.767	37.39	101.010	0.777	37.88	96.830	0.817	39.82			0.590			41%	23.4
7/12/02 12:15	98.750	0.381	18.58	100.650	0.361	17.60	95.970	0.863	42.06			0.401	0.40		45%	23.4
7/15/02 12:20	96.480	0.756	36.83	98.350	0.766	37.32	94.250	0.573	27.91			0.524	0.46		54%	23.4
7/16/02 12:30	95.900	0.576	28.07	97.660	0.685	33.39	93.680	0.566	27.59			0.457	0.46		55%	23.4
7/17/02 12:20	95.170	0.735	35.82	97.350	0.312	15.21	93.070	0.614	29.93			0.415	0.45		53%	23.2
7/18/02 12:20	94.600	0.570	27.78	96.330	1.020	49.71	92.390	0.680	33.14			0.567	0.47		50%	23.2
7/19/02 12:20	94.050	0.550	26.80	95.790	0.540	26.32	91.840	0.550	26.80			0.410	0.46		55%	23.4
7/22/02 12:30	92.850	0.399	19.45	93.360	0.808	39.38	89.730	0.702	34.20			0.477	0.46		45%	23.3
7/23/02 12:55	91.060	1.759	85.74	92.720	0.629	30.66	88.900	0.816	39.76			0.801	0.51		41%	23.3
7/24/02 12:40	90.440	0.627	30.53	92.130	0.596	29.06	88.350	0.556	27.09			0.445	0.50		51%	23.6
7/25/02 12:35	89.900	0.542	26.41	91.610	0.522	25.43	87.820	0.532	25.92			0.399	0.49		55%	23.3
7/29/02 12:45	88.140	0.439	21.41	89.770	0.459	22.38	86.050	0.442	21.53			0.335	0.48		55%	23.3
7/30/02 12:30	87.680	0.465	22.65									44.534	4.15		69%	23.3
7/31/02 12:55	86.960	0.708	34.49									0.177	3.84		49%	23.3
8/1/02 12:45	86.380	0.584	28.46									0.146	3.58		51%	23.3
8/2/02 12:40	85.800	0.582	28.36									0.146	3.56		52%	23.4
avg WVTR (g/hr/m2)			31.43			29.68			30.54					0.46	52%	23.4
average, material type:														28.52		

Untreated Averages**Diam. in cm 5.08**

CORE Date and Time (m/d/y h:mm) in 24 hr clock	A & B-1			A & B-2			A & B-3			avg Δ	adj.avg	R.H.	TEMP.	
	Weight	Water Vapor Loss in 24 hour period	WVTR	Weight	Water Vapor Loss in 24 hour period	WVTR	Weight	Water Vapor Loss in 24 hour period	WVTR					
7/10/02 12:15	109.490			96.030			97.315					67%	23.9	
7/11/02 12:20	108.760	0.727	35.45	95.210	0.817	39.82	96.535	0.777				41%	23.4	
7/12/02 12:15	107.980	0.783	38.14	94.150	1.064	51.84	95.860	0.677				45%	23.4	
7/15/02 12:20	106.265	0.571	27.83	92.585	0.521	25.39	93.850	0.669	32.61	0.587	0.78	54%	23.4	
7/16/02 12:30	105.715	0.546	26.62	91.970	0.611	29.76	93.740	0.109	5.32	0.422	0.74	55%	23.4	
7/17/02 12:20	105.090	0.629	30.67	91.325	0.650	31.65	92.900	0.846	41.22	0.708	0.75	53%	23.2	
7/18/02 12:20	104.495	0.595	29.00	90.690	0.635	30.95	91.920	0.980	47.76	0.737	0.76	50%	23.2	
7/19/02 12:20	103.975	0.520	25.34	90.160	0.530	25.83	91.380	0.540	26.32	0.530	0.73	55%	23.4	
7/22/02 12:30	102.440	0.510	24.88	88.145	0.670	32.66	89.575	0.600	29.25	0.594	0.72	45%	23.3	
7/23/02 12:55	101.195	1.224	59.64	87.250	0.880	42.87	88.395	1.160	56.52	1.088	0.74	41%	23.3	
7/24/02 12:40	100.635	0.566	27.58	86.685	0.571	27.82	87.810	0.591	28.81	0.576	0.72	51%	23.6	
7/25/02 12:35	100.145	0.492	23.96	86.260	0.426	20.78	86.790	1.024	49.88	0.647	0.71	55%	23.3	
7/29/02 12:45	98.465	0.419	20.43	84.385	0.468	22.80	85.985	0.201	9.79	0.363	0.69	55%	23.3	
7/30/02 12:30	98.040	0.429	20.93	83.935	0.455	22.16	85.050	0.945	46.04	0.610	0.68	69%	23.3	
7/31/02 12:55	97.360	0.668	32.57	83.275	0.649	31.61	84.350	0.688	33.53	0.668	0.68	49%	23.3	
8/1/02 12:45	96.815	0.549	26.75	82.695	0.584	28.46	83.740	0.614	29.93	0.582	0.67	51%	23.3	
8/2/02 12:40	96.280	0.537	26.16	82.145	0.552	26.90	83.180	0.562	27.39	0.550	0.66	52%	23.4	
avg WVTR (g/hr/m2)			29.75	30.71			33.17					0.73	52%	23.4
average, material type:											32.25			

Untreated Averages

CORE Date and Time (m/d/y h:mm) in 24 hr clock	A & B-4			A & B-5			A & B-6			avg Δ	adj. avg	R.H.	TEMP.
	Weight	Water Vapor Loss in 24 hour period	WVTR	Weight	Water Vapor Loss in 24 hour period	WVTR	Weight	Water Vapor Loss in 24 hour period	WVTR				
7/10/02 12:15	98.920			96.355			92.805					67%	23.9
7/11/02 12:20	98.145	0.772	37.64	95.565	0.787	38.37	92.005	0.797	38.85	0.589		41%	23.4
7/12/02 12:15	97.765	0.381	18.58	95.060	0.507	24.70	91.085	0.923	44.99	0.453	0.45	45%	23.4
7/15/02 12:20	95.480	0.761	37.08	92.850	0.736	35.86	89.330	0.584	28.48	0.520	0.49	54%	23.4
7/16/02 12:30	94.900	0.576	28.07	92.200	0.646	31.46	88.745	0.581	28.31	0.451	0.47	55%	23.4
7/17/02 12:20	94.210	0.695	33.86	91.760	0.443	21.59	88.135	0.614	29.93	0.438	0.47	53%	23.2
7/18/02 12:20	93.590	0.620	30.21	90.840	0.920	44.83	87.440	0.695	33.87	0.559	0.48	50%	23.2
7/19/02 12:20	93.035	0.555	27.05	90.040	0.800	38.99	86.885	0.555	27.05	0.477	0.48	55%	23.4
7/22/02 12:30	91.850	0.394	19.21	87.865	0.723	35.25	84.520	0.787	38.33	0.476	0.48	45%	23.3
7/23/02 12:55	90.065	1.755	85.50	87.220	0.634	30.90	83.895	0.614	29.94	0.751	0.52	41%	23.3
													23.6
													23.3
													23.3
													23.3
													23.3
													23.4
avg WVTR (g/hr/m2)			34.94			32.95			32.61				
average, material type:											0.48	51%	23.4
											30.98		

Core C-1 & C-2 Silex OH (Brush Applied)

Diam. in cm 5.08

CORE Date and Time (m/d/y h:mm) in 24 hr clock	C-1			C-2			avg Δ	adj.avg	R.H.	TEMP.	
	Weight	Water Vapor Loss in 24 hour period	WVTR	Weight	Water Vapor Loss in 24 hour period	WVTR					
7/10/02 12:15	137.160			100.040					67%	23.9	
7/11/02 12:20	136.270	0.887	43.22	99.180	0.857	41.77			41%	23.4	
7/12/02 12:15	135.250	1.024	49.88	98.200	0.983	47.92			45%	23.4	
7/15/02 12:20	133.620	0.543	26.45	96.040	0.719	35.05	0.631	0.84	54%	23.4	
7/16/02 12:30	133.050	0.566	27.59	95.360	0.675	32.91	0.621	0.78	55%	23.4	
7/17/02 12:20	132.610	0.443	21.59	94.780	0.584	28.46	0.514	0.73	53%	23.2	
7/18/02 12:20	131.760	0.850	41.42	93.840	0.940	45.81	0.895	0.76	50%	23.2	
7/19/02 12:20	131.220	0.540	26.32	93.220	0.620	30.21	0.580	0.73	55%	23.4	
7/22/02 12:30	129.840	0.459	22.37	90.380	0.944	46.03	0.702	0.73	45%	23.3	
7/23/02 12:55	128.830	0.993	48.38	89.770	0.600	29.22	0.796	0.73	41%	23.3	
7/24/02 12:40	127.810	1.031	50.23	89.120	0.657	32.01	0.844	0.75	51%	23.6	
7/25/02 12:35	127.310	0.502	24.45	88.500	0.622	30.32	0.562	0.73	55%	23.3	
7/29/02 12:45	125.540	0.442	21.53	86.440	0.514	25.05	0.478	0.71	55%	23.3	
7/30/02 12:30	125.130	0.414	20.19	85.940	0.505	24.62	0.460	0.69	69%	23.3	
7/31/02 12:55	124.480	0.639	31.14	85.210	0.718	34.97	0.678	0.69	49%	23.3	
8/1/02 12:45	123.910	0.574	27.97	84.560	0.655	31.90	0.614	0.68	51%	23.3	
8/2/02 12:40	123.390	0.522	25.43	83.920	0.642	31.30	0.582	0.68	52%	23.4	
avg WVTR (g/hr/m2)			31.76			34.22			0.75	52%	23.4
average, material type:									34.20		

Core C-3 & C4 Decothane (Brush Applied)

Diam. in cm 5.08

CORE Date and Time (m/d/y h:mm) in 24 hr clock	C-3			C-4			avg Δ	adj.avg	R.H.	TEMP.	
	Weight	Water Vapor Loss in 24 hour period	WVTR	Weight	Water Vapor Loss in 24 hour period	WVTR					
7/10/02 12:15	96.850			94.360					67%	23.9	
7/11/02 12:20	96.180	0.668	32.54	93.650	0.708	34.48			41%	23.4	
7/12/02 12:15	95.790	0.391	19.07	92.930	0.723	35.21			45%	23.4	
7/15/02 12:20	93.970	0.606	29.53	91.150	0.593	28.88	0.599	0.61	54%	23.4	
7/16/02 12:30	93.470	0.497	24.20	90.620	0.526	25.65	0.511	0.59	55%	23.4	
7/17/02 12:20	93.010	0.463	22.57	90.030	0.594	28.95	0.529	0.58	53%	23.2	
7/18/02 12:20	92.420	0.590	28.75	89.410	0.620	30.21	0.605	0.58	50%	23.2	
7/19/02 12:20	91.950	0.470	22.90	88.890	0.520	25.34	0.495	0.57	55%	23.4	
7/22/02 12:30	90.470	0.492	23.99	87.450	0.479	23.34	0.486	0.56	45%	23.3	
7/23/02 12:55	89.570	0.885	43.11	86.200	1.229	59.88	1.057	0.61	41%	23.3	
7/24/02 12:40	89.150	0.424	20.68	85.690	0.515	25.12	0.470	0.60	51%	23.6	
7/25/02 12:35	88.710	0.442	21.52	85.190	0.502	24.45	0.472	0.59	55%	23.3	
7/29/02 12:45	87.190	0.379	18.49	83.470	0.429	20.92	0.404	0.57	55%	23.3	
7/30/02 12:30	86.840	0.354	17.24	83.070	0.404	19.70	0.379	0.56	69%	23.3	
7/31/02 12:55	86.320	0.511	24.91	82.470	0.590	28.74	0.550	0.56	49%	23.3	
8/1/02 12:45	85.850	0.473	23.06	81.940	0.534	26.01	0.503	0.55	51%	23.3	
8/2/02 12:40	85.420	0.431	21.03	81.430	0.512	24.94	0.472	0.55	52%	23.4	
avg WVTR (g/hr/m2)			24.60			28.86			0.59	52%	23.4
average, material type:									27.36		

Core D-1 & D-2 Silex H (Brush Applied)

Diam. in cm 5.08

CORE Date and Time (m/d/y h:mm) in 24 hr clock	D-1			D-2			avg Δ	adj.avg	R.H.	TEMP.	
	Weight	Water Vapor Loss in 24 hour period	WVTR	Weight	Water Vapor Loss in 24 hour period	WVTR					
7/10/02 12:15	115.320			98.440					67%	23.9	
7/11/02 12:20	114.560	0.757	36.91	97.650	0.787	38.37			41%	23.4	
7/12/02 12:15	113.420	1.144	55.75	96.530	1.124	54.77			45%	23.4	
7/15/02 12:20	111.920	0.499	24.34	94.820	0.569	27.75	0.534	0.81	54%	23.4	
7/16/02 12:30	111.380	0.536	26.13	94.210	0.606	29.52	0.571	0.75	55%	23.4	
7/17/02 12:20	110.670	0.715	34.84	93.680	0.534	26.01	0.624	0.73	53%	23.2	
7/18/02 12:20	110.070	0.600	29.24	92.800	0.880	42.88	0.740	0.73	50%	23.2	
7/19/02 12:20	109.540	0.530	25.83	92.200	0.600	29.24	0.565	0.71	55%	23.4	
7/22/02 12:30	107.470	0.688	33.55	90.600	0.532	25.93	0.610	0.69	45%	23.3	
7/23/02 12:55	106.650	0.806	39.28	89.060	1.514	73.77	1.160	0.75	41%	23.3	
7/24/02 12:40	106.090	0.566	27.58	88.460	0.606	29.55	0.586	0.73	51%	23.6	
7/25/02 12:35	105.610	0.482	23.47	87.920	0.542	26.41	0.512	0.71	55%	23.3	
7/29/02 12:45	103.800	0.452	22.01	86.000	0.479	23.35	0.465	0.69	55%	23.3	
7/30/02 12:30	103.200	0.606	29.55	85.530	0.475	23.15	0.541	0.68	69%	23.3	
7/31/02 12:55	102.720	0.472	22.99	84.790	0.727	35.45	0.600	0.67	49%	23.3	
8/1/02 12:45	102.160	0.564	27.48	84.180	0.614	29.93	0.589	0.67	51%	23.3	
8/2/02 12:40	101.570	0.592	28.85	83.530	0.652	31.79	0.622	0.66	52%	23.4	
avg WVTR (g/hr/m2)			30.49			34.24			0.73	52%	23.4
average, material type:									33.46		

Core A4b Keim Dilution Purkristalt (Brush Applied)

Diam. in cm 5.08

CORE Date and Time (m/d/y h:mm) in 24 hr clock	A-4b			avg Δ	adj.avg	R.H.	TEMP.
	Weight	Water Vapor Loss in 24 hour period	WVTR				
7/24/02 12:40	88.910					51%	23.6
7/25/02 12:35	88.250	0.662	32.28	0.662	0.66	55%	23.3
7/29/02 12:45	86.480	0.442	21.53	0.442	0.55	58%	23.3
7/30/02 12:30	86.060	0.424	20.68	0.424	0.51	69%	23.3
7/31/02 12:55	85.390	0.659	32.09	0.659	0.55	49%	23.3
8/1/02 12:45	84.830	0.564	27.48	0.564	0.55	51%	23.3
8/2/02 12:40	84.300	0.532	25.92	0.532	0.55	52%	23.4
8/5/02 12:40	82.890	0.470	22.90	0.470	0.54	56%	23.3
8/6/02 12:10	82.220	0.684	33.35	0.684	0.55	50%	23.2
8/7/02 12:30	81.680	0.533	25.96	0.533	0.55	52%	23.3
8/8/02 12:45	81.140	0.534	26.04	0.534	0.55	54%	23.5
8/9/02 12:55	80.540	0.596	29.04	0.596	0.55	49%	23.6
8/10/02 12:30	80.120	0.427	20.83	0.427	0.54	55%	23.3
8/13/02 13:00	78.510	0.533	25.97	0.533	0.54	59%	23.3
8/14/02 12:30	77.960	0.562	27.37	0.562	0.54	54%	23.3
avg WVTR (g/hr/m2)			26.53		0.54		23.4
average, material type:					26.55		

Core A5b Keim Granital (Brush Applied)

Diam. in cm 5.08

CORE Date and Time (m/d/y h:mm) in 24 hr clock	A-5b			avg Δ	adj.avg	R.H.	TEMP.
	Weight	Water Vapor Loss in 24 hour period	WVTR				
7/24/02 12:40	81.270					51%	23.6
7/25/02 12:35	80.660	0.612	29.83	0.612	0.61	55%	23.3
7/29/02 12:45	79.000	0.414	20.19	0.414	0.51	58%	23.3
7/30/02 12:30	78.380	0.627	30.53	0.627	0.55	69%	23.3
7/31/02 12:55	77.690	0.678	33.05	0.678	0.58	49%	23.3
8/1/02 12:45	77.100	0.594	28.95	0.594	0.59	51%	23.3
8/2/02 12:40	76.510	0.592	28.85	0.592	0.59	52%	23.4
8/5/02 12:40	74.940	0.523	25.50	0.523	0.58	56%	23.3
8/6/02 12:10	74.330	0.623	30.36	0.623	0.58	50%	23.2
8/7/02 12:30	73.740	0.582	28.36	0.582	0.58	52%	23.3
8/8/02 12:45	73.180	0.554	27.01	0.554	0.58	54%	23.5
8/9/02 12:55	72.560	0.616	30.01	0.616	0.58	49%	23.6
8/10/02 12:30	72.070	0.499	24.30	0.499	0.58	55%	23.3
8/13/02 13:00	70.370	0.563	27.42	0.563	0.58	59%	23.3
8/14/02 12:30	69.770	0.613	29.86	0.613	0.58	54%	23.3
avg WVTR (g/hr/m2)			28.16		0.57		23.4
average, material type:					28.05		

Core A6b Keim Restauro (Brush Applied)

Diam. in cm 5.08

CORE Date and Time (m/d/y h:mm) in 24 hr clock	A-6b			avg Δ	adj.avg	R.H.	TEMP.
	Weight	Water Vapor Loss in 24 hour period	WVTR				
7/24/02 12:40	78.220					51%	23.6
7/25/02 12:35	77.630	0.592	28.85	0.592	0.59	55%	23.3
7/29/02 12:45	75.800	0.457	22.26	0.457	0.52	58%	23.3
7/30/02 12:30	75.340	0.465	22.65	0.465	0.50	69%	23.3
7/31/02 12:55	74.670	0.659	32.09	0.659	0.54	49%	23.3
8/1/02 12:45	74.060	0.614	29.93	0.614	0.56	51%	23.3
8/2/02 12:40	73.490	0.572	27.87	0.572	0.56	52%	23.4
8/5/02 12:40	71.870	0.540	26.32	0.540	0.56	56%	23.3
8/6/02 12:10	71.260	0.623	30.36	0.623	0.57	50%	23.2
8/7/02 12:30	70.660	0.592	28.84	0.592	0.57	52%	23.3
8/8/02 12:45	70.100	0.554	27.01	0.554	0.57	54%	23.5
8/9/02 12:55	69.460	0.636	30.97	0.636	0.57	49%	23.6
8/10/02 12:30	68.980	0.488	23.81	0.488	0.57	55%	23.3
8/13/02 13:00	67.230	0.579	28.23	0.579	0.57	59%	23.3
8/14/02 12:30	66.630	0.613	29.86	0.613	0.57	54%	23.3
avg WVTR (g/hr/m2)			27.79		0.56		23.4
average, material type:					27.43		

Core B5b Prosoco H100 (Brush Applied)

Diam. in cm 5.08

CORE Date and Time (m/d/y h:mm) in 24 hr clock	B-5b			avg Δ	adj.avg	R.H.	TEMP.
	Weight	Water Vapor Loss in 24 hour period	WVTR				
7/30/02 12:30	89.900					69%	23.3
7/31/02 12:55	89.200	0.688	33.53	0.688	0.69	49%	23.3
8/1/02 12:45	88.600	0.604	29.44	0.604	0.65	51%	23.3
8/2/02 12:40	88.040	0.562	27.39	0.562	0.62	52%	23.4
8/5/02 12:40	86.490	0.517	25.18	0.517	0.59	56%	23.3
8/6/02 12:10	85.860	0.643	31.35	0.643	0.60	50%	23.2
8/7/02 12:30	85.260	0.592	28.84	0.592	0.60	52%	23.3
8/8/02 12:45	84.690	0.564	27.49	0.564	0.60	54%	23.5
8/9/02 12:55	84.050	0.636	30.97	0.636	0.60	49%	23.6
8/10/02 12:30	83.560	0.499	24.30	0.499	0.59	55%	23.3
8/13/02 13:00	81.760	0.596	29.04	0.596	0.59	59%	23.3
8/14/02 12:30	81.150	0.623	30.36	0.623	0.59	54%	23.3
8/15/02 12:45	80.480	0.663	32.31	0.663	0.60	45%	23.3
8/16/02 12:00	79.950	0.547	26.66	0.547	0.59	45%	23.3
8/19/02 12:45	77.700	0.742	36.17	0.742	0.61	46%	23.3
avg WVTR (g/hr/m2)			29.50		0.60		23.3
average, material type:					29.43		

Core B6b Prosoco OH100 (Brush Applied)

Diam. in cm 5.08

CORE Date and Time (m/d/y h:mm) in 24 hr clock	B-6b			avg Δ	adj.avg	R.H.	TEMP.
	Weight	Water Vapor Loss in 24 hour period	WVTR				
7/30/02 12:30	86.110					69%	23.3
7/31/02 12:55	85.440	0.659	32.09	0.659	0.66	49%	23.3
8/1/02 12:45	84.860	0.584	28.46	0.584	0.62	51%	23.3
8/2/02 12:40	84.270	0.592	28.85	0.592	0.61	52%	23.4
8/5/02 12:40	82.700	0.523	25.50	0.523	0.59	56%	23.3
8/6/02 12:10	82.030	0.684	33.35	0.684	0.61	50%	23.2
8/7/02 12:30	81.410	0.612	29.80	0.612	0.61	52%	23.3
8/8/02 12:45	80.800	0.604	29.42	0.604	0.61	54%	23.5
8/9/02 12:55	80.030	0.765	37.27	0.765	0.63	49%	23.6
8/10/02 12:30	79.870	0.163	7.94	0.163	0.58	55%	23.3
8/13/02 13:00	77.680	0.725	35.33	0.725	0.59	59%	23.3
8/14/02 12:30	77.050	0.643	31.35	0.643	0.60	54%	23.3
8/15/02 12:45	76.380	0.663	32.31	0.663	0.60	45%	23.3
8/16/02 12:00	75.810	0.588	28.67	0.588	0.60	45%	23.3
8/19/02 12:45	74.540	0.419	20.42	0.419	0.59	46%	23.3
avg WVTR (g/hr/m2)			28.63		0.60		23.3
average, material type:				28.99			

Core C5 Keim Dilution (saturated)

Diam. in cm 5.08

CORE Date and Time (m/d/y h:mm) in 24 hr clock	C-5 Weight Water Vapor Loss in 24 hour period	WVTR	avg Δ	adj.avg	R.H.	TEMP.	
7/30/02 12:30	71.620				69%	23.3	
7/31/02 12:55	70.980	0.629	30.66	0.629	0.63	49%	23.3
8/1/02 12:45	70.440	0.544	26.50	0.544	0.59	51%	23.3
8/2/02 12:40	69.930	0.512	24.94	0.512	0.56	52%	23.4
8/5/02 12:40	68.480	0.483	23.55	0.483	0.54	56%	23.3
8/6/02 12:10	67.920	0.572	27.87	0.572	0.55	50%	23.2
8/7/02 12:30	67.390	0.523	25.47	0.523	0.54	52%	23.3
8/8/02 12:45	66.830	0.554	27.01	0.554	0.55	54%	23.5
8/9/02 12:55	66.250	0.576	28.07	0.576	0.55	49%	23.6
8/10/02 12:30	65.830	0.427	20.83	0.427	0.54	55%	23.3
8/13/02 13:00	64.300	0.506	24.68	0.506	0.53	59%	23.3
8/14/02 12:30	63.760	0.551	26.88	0.551	0.53	54%	23.3
8/15/02 12:45	63.170	0.584	28.46	0.584	0.54	45%	23.3
8/16/02 12:00	62.710	0.475	23.14	0.475	0.53	45%	23.3
8/19/02 12:45	60.790	0.633	30.87	0.633	0.54	46%	23.3
avg WVTR (g/hr/m2)		26.35		0.55		23.3	
average, material type:				26.47			

Core C6 Keim Granital (saturated)

Diam. in cm 5.08							
CORE	C-6						
Date and Time (m/d/y h:mm) in 24 hr clock	Weight	Water Vapor Loss in 24 hour period	WVTR	avg Δ	adj.avg	R.H.	TEMP.
7/30/02 12:30	73.980					69%	23.3
7/31/02 12:55	73.320	0.649	31.61	0.649	0.65	49%	23.3
8/1/02 12:45	72.750	0.574	27.97	0.574	0.61	51%	23.3
8/2/02 12:40	72.210	0.542	26.41	0.542	0.59	52%	23.4
8/5/02 12:40	70.710	0.500	24.37	0.500	0.57	56%	23.3
8/6/02 12:10	70.130	0.592	28.87	0.592	0.57	50%	23.2
8/7/02 12:30	69.570	0.552	26.92	0.552	0.57	52%	23.3
8/8/02 12:45	69.030	0.534	26.04	0.534	0.56	54%	23.5
8/9/02 12:55	68.430	0.596	29.04	0.596	0.57	49%	23.6
8/10/02 12:30	67.990	0.448	21.82	0.448	0.55	55%	23.3
8/13/02 13:00	66.320	0.553	26.94	0.553	0.55	59%	23.3
8/14/02 12:30	65.740	0.592	28.87	0.592	0.56	54%	23.3
8/15/02 12:45	65.140	0.594	28.94	0.594	0.56	45%	23.3
8/16/02 12:00	64.640	0.516	25.15	0.516	0.56	45%	23.3
8/19/02 12:45	62.590	0.676	32.96	0.676	0.57	46%	23.3
avg WVTR (g/hr/m2)			27.56		0.57		23.3
average, material type:					27.62		

Core C9 Keim Restauro (saturated)

Diam. in cm 5.08

CORE	C-9						
Date and Time (m/d/y h:mm) in 24 hr clock	Weight	Water Vapor Loss in 24 hour period	WVTR	avg Δ	adj.avg	R.H.	TEMP.
7/30/02 12:30	69.800					69%	23.3
7/31/02 12:55	69.090	0.698	34.01	0.698	0.70	49%	23.3
8/1/02 12:45	68.490	0.604	29.44	0.604	0.65	51%	23.3
8/2/02 12:40	67.890	0.602	29.34	0.602	0.63	52%	23.4
8/5/02 12:40	66.230	0.553	26.97	0.553	0.61	56%	23.3
8/6/02 12:10	65.580	0.664	32.35	0.664	0.62	50%	23.2
8/7/02 12:30	64.990	0.582	28.36	0.582	0.62	52%	23.3
8/8/02 12:45	64.380	0.604	29.42	0.604	0.62	54%	23.5
8/9/02 12:55	63.710	0.665	32.43	0.665	0.62	49%	23.6
8/10/02 12:30	63.200	0.519	25.29	0.519	0.61	55%	23.3
8/13/02 13:00	61.380	0.602	29.36	0.602	0.61	59%	23.3
8/14/02 12:30	60.770	0.623	30.36	0.623	0.61	54%	23.3
8/15/02 12:45	60.090	0.673	32.80	0.673	0.62	45%	23.3
8/16/02 12:00	59.520	0.588	28.67	0.588	0.61	45%	23.3
8/19/02 12:45	58.270	0.412	20.10	0.412	0.60	46%	23.3
avg WVTR (g/hr/m2)			29.21		0.62		23.3
average, material type:					29.67		

Core C10 Silex H (saturated)

Diam. in cm 5.08

CORE	C-10						
Date and Time (m/d/y h:mm) in 24 hr clock	Weight	Water Vapor Loss in 24 hour period	WVTR	avg Δ	adj.avg	R.H.	TEMP.
8/2/02 12:40	80.090					52%	23.4
8/5/02 12:40	78.630	0.487	23.72	0.487	0.49	56%	23.3
8/6/02 12:10	78.090	0.551	26.88	0.551	0.52	50%	23.2
8/7/02 12:30	77.560	0.523	25.47	0.523	0.52	52%	23.3
8/8/02 12:45	77.010	0.544	26.53	0.544	0.53	54%	23.5
8/9/02 12:55	76.420	0.586	28.55	0.586	0.54	49%	23.6
8/10/02 12:30	75.980	0.448	21.82	0.448	0.52	55%	23.3
8/13/02 13:00	74.350	0.540	26.30	0.540	0.53	59%	23.3
8/14/02 12:30	73.820	0.541	26.38	0.541	0.53	54%	23.3
8/15/02 12:45	73.240	0.574	27.97	0.574	0.53	45%	23.3
8/16/02 12:00	72.750	0.506	24.65	0.506	0.53	45%	23.3
8/19/02 12:45	70.730	0.666	32.48	0.666	0.54	46%	23.3
8/20/02 13:00	70.110	0.614	29.90	0.614	0.55	47%	23.6
8/21/02 14:00	69.450	0.634	30.88	0.634	0.55	49%	23.3
8/22/02 12:20	68.950	0.537	26.18	0.537	0.55	20%	23.9
avg WVTR (g/hr/m2)			26.98		0.53		23.4
average, material type:					26.50		

Core C11 Silex 0H (saturated)

Diam. in cm 5.08

CORE Date and Time (m/d/y h:mm) in 24 hr clock	C-11			avg Δ	adj.avg	R.H.	TEMP.
	Weight	Water Vapor Loss in 24 hour period	WVTR				
8/2/02 12:40	70.820					52%	23.4
8/5/02 12:40	69.130	0.563	27.45	0.563	0.56	56%	23.3
8/6/02 12:10	68.430	0.715	34.84	0.715	0.64	50%	23.2
8/7/02 12:30	67.790	0.631	30.76	0.631	0.64	52%	23.3
8/8/02 12:45	67.140	0.643	31.35	0.643	0.64	54%	23.5
8/9/02 12:55	66.410	0.725	35.33	0.725	0.66	49%	23.6
8/10/02 12:30	65.890	0.529	25.79	0.529	0.63	55%	23.3
8/13/02 13:00	63.970	0.636	30.97	0.636	0.63	59%	23.3
8/14/02 12:30	63.340	0.643	31.35	0.643	0.64	54%	23.3
8/15/02 12:45	62.660	0.673	32.80	0.673	0.64	45%	23.3
8/16/02 12:00	62.060	0.619	30.18	0.619	0.64	45%	23.3
8/19/02 12:45	59.700	0.779	37.94	0.779	0.65	46%	23.3
8/20/02 13:00	58.960	0.732	35.69	0.732	0.66	47%	23.6
8/21/02 14:00	58.200	0.730	35.56	0.730	0.66	49%	23.3
8/22/02 12:20	57.600	0.645	31.42	0.645	0.66	20%	23.9
avg WVTR (g/hr/m2)			32.25		0.64		23.4
average, material type:					31.84		

Core D3 H100 Conservare (saturated)

Diam. in cm 5.08							
CORE	D-3						
Date and Time (m/d/y h:mm) in 24 hr clock	Weight	Water Vapor Loss in 24 hour period	WVTR	avg Δ	adj.avg	R.H.	TEMP.
8/2/02 12:40	73.480					52%	23.4
8/5/02 12:40	72.000	0.493	24.04	0.493	0.49	56%	23.3
8/6/02 12:10	71.380	0.633	30.86	0.633	0.56	50%	23.2
8/7/02 12:30	70.830	0.542	26.44	0.542	0.56	52%	23.3
8/8/02 12:45	70.270	0.554	27.01	0.554	0.56	54%	23.5
8/9/02 12:55	69.630	0.636	30.97	0.636	0.57	49%	23.6
8/10/02 12:30	69.170	0.468	22.81	0.468	0.55	55%	23.3
8/13/02 13:00	67.450	0.569	27.75	0.569	0.56	59%	23.3
8/14/02 12:30	66.900	0.562	27.37	0.562	0.56	54%	23.3
8/15/02 12:45	66.280	0.614	29.90	0.614	0.56	45%	23.3
8/16/02 12:00	65.780	0.516	25.15	0.516	0.56	45%	23.3
8/19/02 12:45	63.690	0.689	33.60	0.689	0.57	46%	23.3
8/20/02 13:00	63.010	0.673	32.80	0.673	0.58	47%	23.6
8/21/02 14:00	62.350	0.634	30.88	0.634	0.58	49%	23.3
8/22/02 12:20	61.810	0.580	28.28	0.580	0.58	20%	23.9
avg WVTR (g/hr/m2)			28.42		0.57		23.4
average, material type:					27.99		

Core D4 OH100 (saturated)

Diam. in cm 5.08

CORE	D-4						
Date and Time (m/d/y h:mm) in 24 hr clock	Weight	Water Vapor Loss in 24 hour period	WVTR	avg Δ	adj.avg	R.H.	TEMP.
8/2/02 12:40	79.840					52%	23.4
8/5/02 12:40	78.260	0.527	25.67	0.527	0.53	56%	23.3
8/6/02 12:10	77.650	0.623	30.36	0.623	0.57	50%	23.2
8/7/02 12:30	77.030	0.612	29.80	0.612	0.59	52%	23.3
8/8/02 12:45	76.460	0.564	27.49	0.564	0.58	54%	23.5
8/9/02 12:55	75.760	0.695	33.88	0.695	0.60	49%	23.6
8/10/02 12:30	75.270	0.499	24.30	0.499	0.59	55%	23.3
8/13/02 13:00	73.450	0.602	29.36	0.602	0.59	59%	23.3
8/14/02 12:30	72.860	0.603	29.36	0.603	0.59	54%	23.3
8/15/02 12:45	72.200	0.653	31.83	0.653	0.60	45%	23.3
8/16/02 12:00	71.620	0.599	29.18	0.599	0.60	45%	23.3
8/19/02 12:45	69.420	0.726	35.37	0.726	0.61	46%	23.3
8/20/02 13:00	68.730	0.683	33.28	0.683	0.62	47%	23.6
8/21/02 14:00	68.000	0.701	34.15	0.701	0.62	49%	23.3
8/22/02 12:20	67.450	0.591	28.80	0.591	0.62	20%	23.9
avg WVTR (g/hr/m2)			30.20		0.60		23.4
average, material type:					29.67		

Core DUMMY C-8**Diam. in cm 5.08**

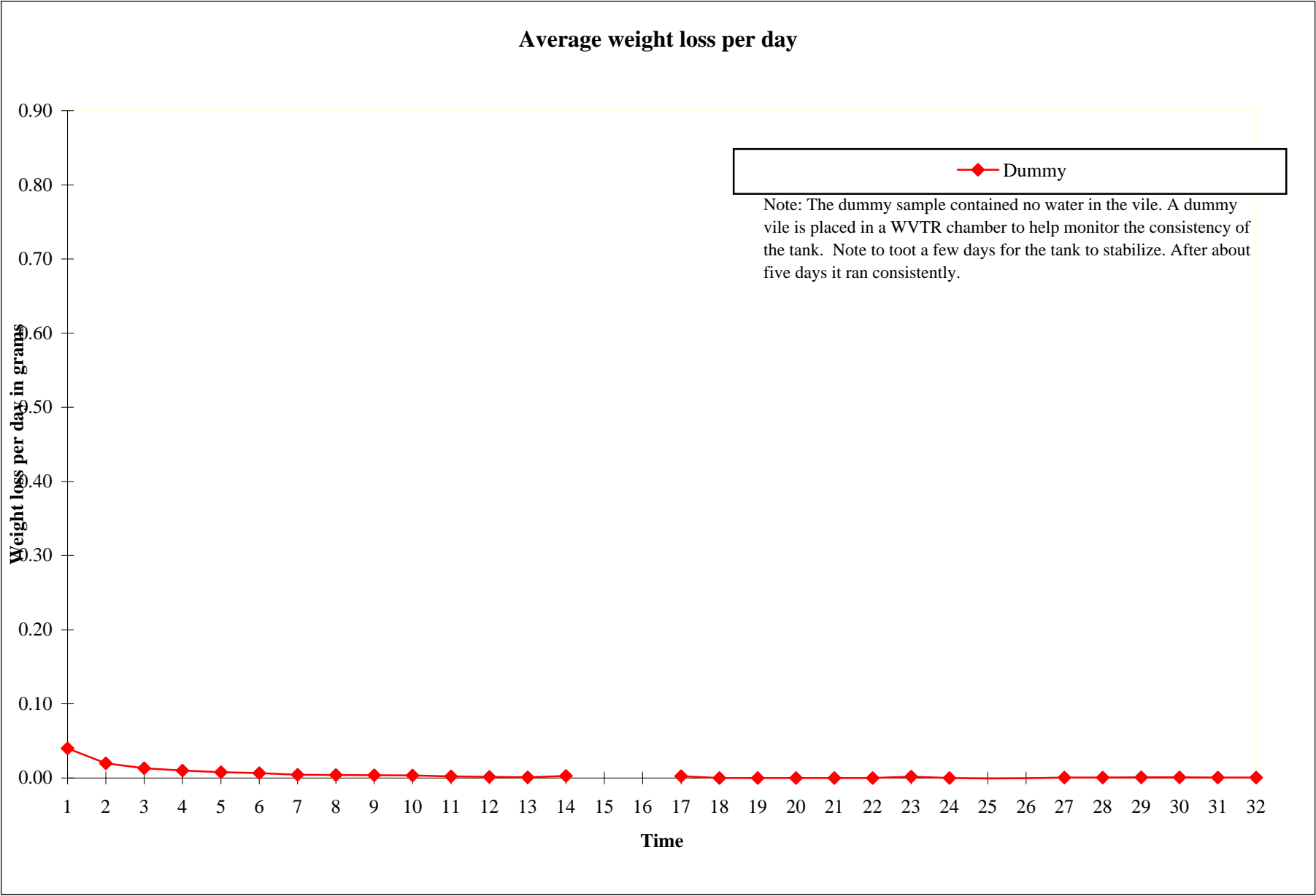
CORE Date and Time (m/d/y h:mm) in 24 hr clock	DM Weight	Water Vapor Loss in 24 hour period	WVTR	avg Δ	adj.avg	R.H.	TEMP.	TIME.
7/10/02 12:15	40.250					67%	23.9	0
7/11/02 12:20	40.210	0.040	1.94	0.040	0.04	41%	23.4	24
7/12/02 12:15	40.210	0.000	0.00	0.000	0.02	45%	23.4	48
7/15/02 12:20	40.210	0.000	0.00	0.000	0.01	54%	23.4	72
7/16/02 12:30	40.210	0.000	0.00	0.000	0.01	55%	23.4	96
7/17/02 12:20	40.210	0.000	0.00	0.000	0.01	53%	23.2	120
7/18/02 12:20	40.210	0.000	0.00	0.000	0.01	50%	23.2	144
7/19/02 12:20	40.220	-0.010	-0.49	-0.010	0.00	55%	23.4	168
7/22/02 12:30	40.210	0.003	0.16	0.003	0.00	45%	23.3	192
7/23/02 12:55	40.210	0.000	0.00	0.000	0.00	41%	23.3	216
7/24/02 12:40	40.210	0.000	0.00	0.000	0.00	51%	23.6	240
7/25/02 12:35	40.220	-0.010	-0.49	-0.010	0.00	55%	23.3	264
7/29/02 12:45	40.230	-0.002	-0.12	-0.002	0.00	55%	23.3	288
7/30/02 12:30	40.240	-0.010	-0.49	-0.010	0.00	69%	23.3	312
7/31/02 12:55	40.210	0.029	1.44	0.029	0.00	49%	23.3	336

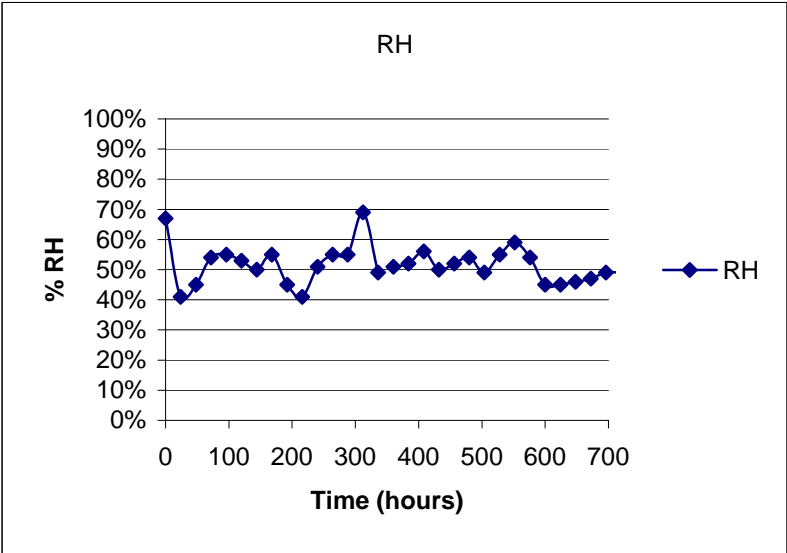
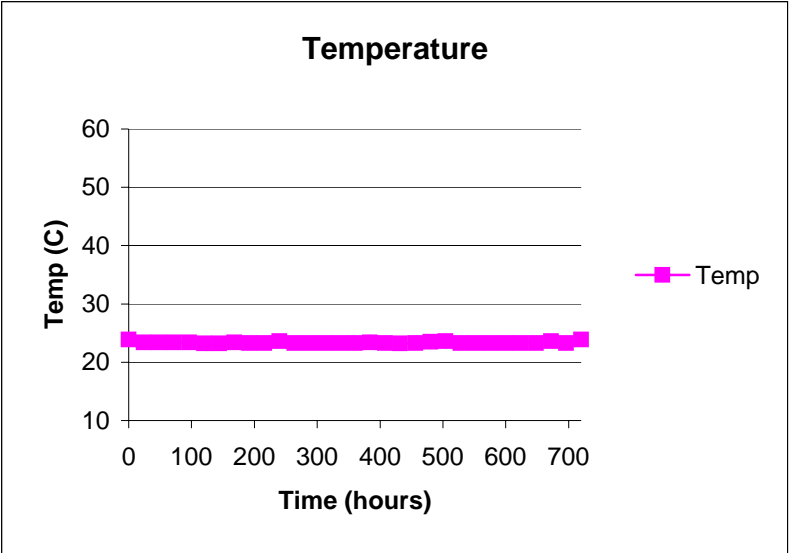
Core DUMMY C-8 (cont.)

8/1/02 12:45	40.210	0.000	0.00	0.000	0.00	51%	23.3	360
8/2/02 12:40	40.210	0.000	0.00	0.000	0.00	52%	23.4	384
8/5/02 12:40	40.210	0.000	0.00	0.000	0.00	56%	23.3	408
8/6/02 12:10	40.210	0.000	0.00	0.000	0.00	50%	23.2	432
8/7/02 12:30	40.210	0.000	0.00	0.000	0.00	52%	23.3	456
8/8/02 12:45	40.210	0.000	0.00	0.000	0.00	54%	23.5	480
8/9/02 12:55	40.200	0.010	0.48	0.010	0.00	49%	23.6	504
8/10/02 12:30	40.210	-0.010	-0.50	-0.010	0.00	55%	23.3	528
8/13/02 13:00	40.220	-0.003	-0.16	-0.003	0.00	59%	23.3	552
8/14/02 12:30	40.220	0.000	0.00	0.000	0.00	54%	23.3	576
8/15/02 12:45	40.210	0.010	0.48	0.010	0.00	45%	23.3	600
8/16/02 12:00	40.210	0.000	0.00	0.000	0.00	45%	23.3	624
8/19/02 12:45	40.200	0.003	0.16	0.003	0.00	46%	23.3	648
8/20/02 13:00	40.200	0.000	0.00	0.000	0.00	47%	23.6	672
8/21/02 14:00	40.200	0.000	0.00	0.000	0.00	49%	23.3	696
8/22/02 12:20	40.200	0.000	0.00	0.000	0.00	49%	23.9	720
avg WVTR (g/hr/m2)			0.02		0.00		23.3	

average, material type:

0.02





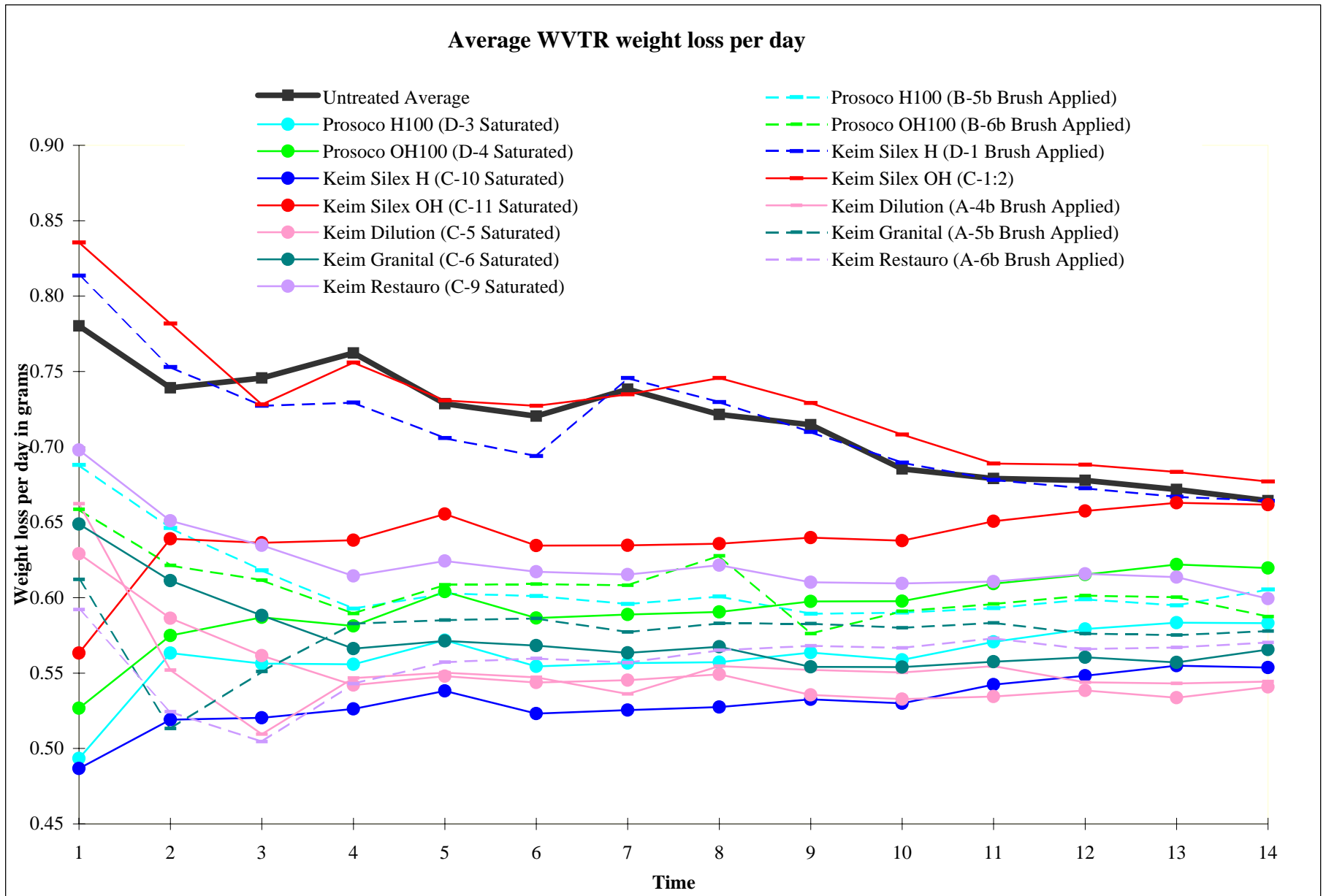


Table 5-Water Vapor Transmission Rate*

<i>Sample</i>	<i>Treatment</i>	<i>Average WVTR g·m⁻²·hr⁻¹</i>
A 1:6 & B 1:6	Untreated	32.25
A-4b	Keim Dilution Purkristalt (Brush Applied)	26.55
A-5b	Keim Granital (Brush Applied)	28.05
A-6b	Keim Restauro (Brush Applied)	27.43
B-5b	Prosoco H100 (Brush Applied)	29.43
B-6b	Prosoco OH100 (Brush Applied)	28.99
C-1 & C-2	Keim Silex OH (Brush Applied)	34.20
C-5	Keim Dilution (saturated)	26.47
C-6	Keim Granital (saturated)	27.62
C-9	Keim Restauro (saturated)	29.67
C-10	Keim Silex H (saturated)	26.50
C-11	Keim Silex OH (saturated)	31.84
D-1 & D-2	Silex H (Brush Applied)	33.46
D-3	H100 Conservare (saturated)	27.99
D-4	OH100 (saturated)	29.67

*NOTE: The average temperature and relative humidity during the test was 22°C and 50% RH. The Untreated is an average of multiple core samples. Its average is slightly lower than some treated samples because it illustrates the average permeability of the entire stone.